



MOULAMEIN PUBLIC SCHOOL

2018 Term 2 Week 7 Newsletter

T: 03 58 875 208

Fax: 03 58 875 102

E: moulamein-p.school@det.nsw.edu.au

www.moulamein-p.schools.nsw.edu.au

In this week's issue

- ▶ Principal's Message
- ▶ Kindergarten 2019
- ▶ Art Workshops
- ▶ Homework Rewards for Year 3-6

Upcoming Events

7 th June	Regional Cross Country
15 th June	<u>Assembly 12.30 School Hall</u>
12 th June	Parent Teacher Interviews
2.00pm 12 th June	P & C Meeting

**We are taking
names for 2019
Kindergarten
NOW!**

Delivering quality and excellence in education

Principal Messages

Kindergarten 2019

We are currently in the process of organising dates for our 2019 Kindergarten transition program. If you know of anyone who has a child that will be starting Kindergarten in 2019 and is not in touch with the preschool, please ensure that they contact the school to be part of the transition program and parent information sessions next term. We are just taking names and details at this stage.

Art Workshops

In preparation for an end-of-year exhibition students will be participating in visual arts workshops. Today students in Year 3-6 were broken up into two groups and one group participated in a Science day and the other an Art workshop.

All students K-6 will have the opportunity to explore their creative side and experience print making, drawing lessons and experiment with painting techniques. All artworks will be kept at school until the end of the year for exhibition at the Moulamein Art Gallery.

Homework Rewards Year 3-6

To help encourage students to complete their assigned homework in Years 3-6, later in the term we will hold a special movie afternoon with snacks for those students who consistently hand their work in as a reward. Students must complete 80% of their homework to attend the movie



afternoon. This also means they must hand it in on time as well. We feel that students who consistently complete homework to a high standard deserve a reward. We must always find time to celebrate success and effort!

New Furniture

Students in Years 3-6 were very excited this week when they saw the truck arrive delivering brand new furniture that I had budgeted for this year. Students will have brand new desks and comfortable chairs.



Due to the varying height of students, we decided that it would be best to order desks that have adjustable legs. These desks look fantastic and are far more modern and sleek. All desks are single, allowing students to have personal space and ensuring they can adjust it to necessary height. Each desk also has their own storage too. They are similar to the desk below, but we have a different colour scheme.



All the old furniture will be placed in a sale later in the year after the sports shed is finally built and we can get in and clean out the old woodwork room. We look forward to setting the room up this week!

Improved Garden Beds

When you walk into the school, you can't help but notice the improved garden beds. Brett has spent time straightening the old borders and re-building parts to improve the appearance of the school. They look fantastic!

Jennie Wilson- Principal

Kinder, Year 1 and Year 2's Informative Writing



After reading about Banjo and Ruby Red by Libby Gleeson as part of our 'Farm' themed English unit, students in K/1/2 had the opportunity to learn about other types of working dogs. In preparation for their Independent Writing, students watched two short clips about dogs and read the information book *Working Dogs* with Miss Fay. Using information picked up from these sources, students then wrote their own information reports about how dogs help us. Here are some samples.

Dogs

Police dogs can help the police catch bad guys.

By Nate

Dogs

Dogs have a good sense of smell. They can track people and help people.

By Blayk

Dogs

Dogs help people who are blind.

Dogs are farm animals. They help farmers. They help them with the sheep and lambs to round them up into the paddocks.

Rescue dogs help to find people who are trapped under wood.

By Mila

Dogs

Farm dogs help keep animals safe. Farm dogs round up sheep and cattle.

Companion dogs help people who are old.

Sled dogs help people who live in the snow

By Lawson

Dogs

Sled dogs pull the people over the snow.

Dogs help sniff out people when they are trapped in the house.

Farm dogs help by keeping creatures away.

Guide dogs help people who are blind.

Rescue dogs help people who are trapped in snow.

By Fletcher



Dogs

Dogs are farm animals. They have good senses.

Police dogs can find people in the forest.

Sled dogs live in the snow. Sled dogs pull the sled to make it move.

By Maddy

Dogs

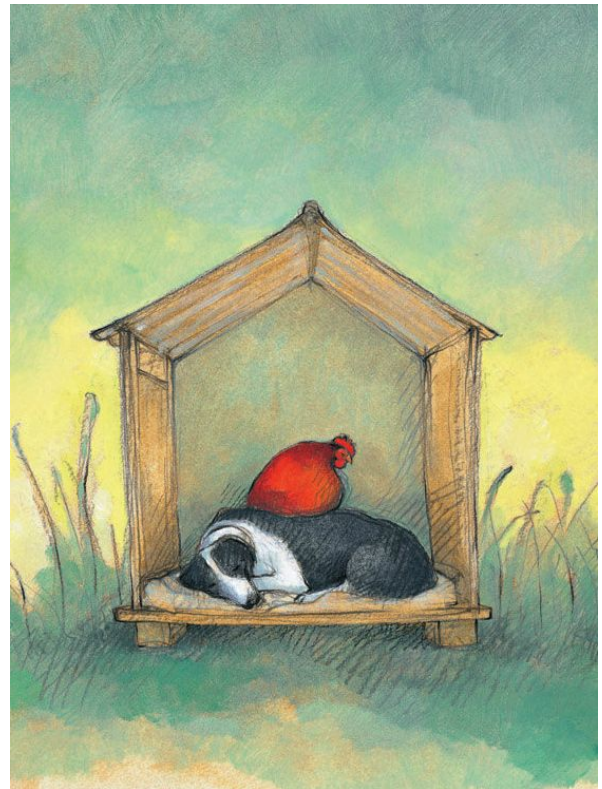
Farm dogs help to do sheep work.

Also, police dogs help people who are lost.

Rescue dogs help people who are stuck in the snow.

Guide dogs help people who are blind.

By Lilly



Dogs

Farm dogs help to round up sheep.

Police dogs help find people.

By Amy

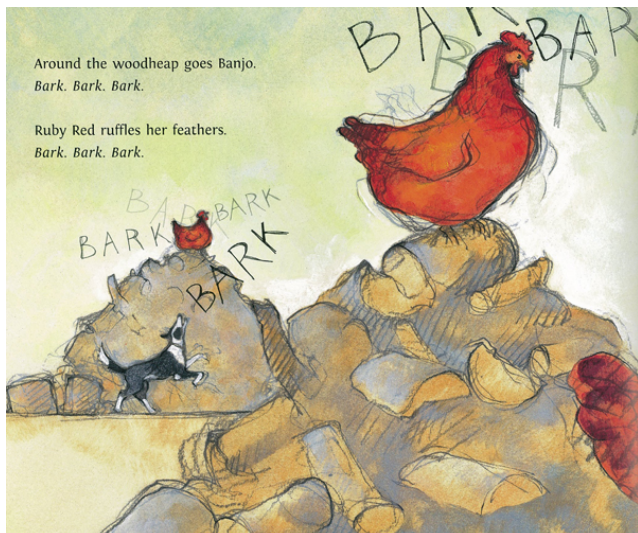
Dogs

You can use farm dogs to herd sheep and other animals. Farm dogs can be used for lots of animals. They watch the farm animals so no other predators eat them.

Rescue dogs can find people that are in trouble or are trapped in a home that is on fire, or are trapped in the snow. Rescue dogs can dig them out of the snow.

Police dogs go to the airport and check that no one is hiding guns or other dangerous things. If they are, they have to get them out of the plane. Police dogs can do lots of other different things.

By Jazmyn



Working Dogs

Dogs can help people.

Farm dogs can round up sheep or hens.

Police dogs help people that are lost or stuck under the dirt.

Guide dogs help people that are blind.

Companion dogs come to visit people.

By Paige

Working Dogs

Dogs can help us in many ways. All types of dogs are different breeds.

Farm dogs help to round up the chooks. They also help to round up the sheep and cows.

Rescue dogs help us find people who are trapped in a house that has fallen in an earthquake.

Police dogs can help the police catch robbers. Police dogs can also help police find someone who is lost.

Guide dogs can help people who are blind. Dogs stop when the lights turn red and go when they turn green.

Sled dogs help someone who needs to get across the snow and ice.

Companion dogs help residents a long way from where they are, like at the Edward River Gardens.

By Georgie

If you would like to access the lovely book that the students enjoyed, you can watch a reading on YouTube.

Here is the link:

<https://www.youtube.com/watch?v=bYmabjjWkx5>

Alternatively you can search, Banjo and Ruby by Libby Gleeson on YouTube. I have also seen this book available through book club.