



Moulamein Public School

Email: Moulamein-p.school@det.nsw.edu.au

www.moulamein-p.school@det.nsw.edu.au

2020 Term 3 Week 3

In this Issue:

- ◆ Principal Messages
- ◆ Education Week
- ◆ COVID-19 Restrictions
- ◆ Wellbeing Survey
- ◆ Around the Classroom with:
 - * Year 5/6 Writing
 - * Year 1/2

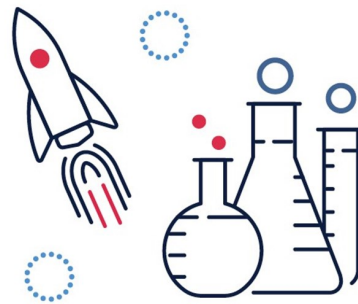
Contact us on:

5887 5208 Phone

5887 5102 Fax

Principal's Messages

This week we celebrate Education Week for 2021. Our official day for celebrations will be Thursday this week. Due to COVID-19 restrictions we are unable to invite parents into our classroom and schools. So this year, we will post photos and videos on our Facebook page. Please make sure you check-in during the day and comment on our photos as a way of joining in our activities. This year we will be embracing STEM.



STEM (Science, Technology, Engineering and Mathematics) education:

- is an approach to teaching science and technology, and mathematics
- fosters inquiry learning in our complex world
- helps teachers guide students to apply their knowledge and understandings, inquire into their world, and solve complex, authentic problems involving contextually rich projects.
- Embraces technology in a meaningful way
- Promotes creativity, problem-solving and critical thinking strategies.

Through STEM, we encourage students to:

- be confident in their ability to design and engineer creative solutions
- apply their understandings in mathematics, science and technology
- engage in collaborative teams
- take on more challenging STEM subjects.

Our Education Week 2020 theme, 'Learning together', reflects an incredible year for NSW public school students, staff and parents, and the partnerships that have been strengthened in response. Our teachers and students are lifelong learners, collaborating in a positive learning environment to achieve their best. Learning together makes us strong and creates resilient communities.

This week we embrace the whole NSW public education community, highlighting the achievements of local schools and the role of public schools as the cornerstone of their communities.

COVID -19 Restrictions

Each week I will publish updated COVID-19 information that is relevant to our school and community. Sometimes this information will be the same and will act as a reminder. At this stage, NSW schools remain operational for staff and students. We have a number of procedures in place to improve safety, but students are expected to attend each day, unless they are sick. There are rapidly changing rules and circumstances, due to our location and if there is an urgent message I need to get to you, I will send you a SMS message via your mobile phone number supplied to the school. If you have recently changed your number, please ensure that you call the office and have this updated immediately.

The Department of Education continues to deliver guidelines for schools to follow. These guidelines and restrictions are continually changing due to the latest health issues we are facing. The current restrictions are now in place:

- ⇒ NSW border zone residents must self-isolate if they have travelled outside the Victorian border zone before re-entering NSW using a valid permit or if they entered Victoria other than for a permitted purpose.
- ⇒ All students who live on the New South Wales side of the border, in a border town will not need to do anything different unless they have travelled outside the Victorian border zone. In this case they will need to self-isolate for 14 days before returning to school.
- ⇒ All staff and students returning from Victoria must have a permit to enter NSW and are required to self-isolate for a period of 14 days.
- ⇒ Non-essential adults are still not permitted on school grounds or at school events. This includes parents and carers.
- ⇒ Parents need to social distance at pick-up areas and drop off zones
- ⇒ Increased cleaning will continue.
- ⇒ All suspected and confirmed cases of COVID-19 should be reported to the Principal.
- ⇒ Please DO NOT send your child to school if they experience any symptoms and are unwell.

Activities on hold until further notice:

- ◇ Kindergarten orientation
- ◇ School camps
- ◇ Interstate excursions
- ◇ Parent and Carer volunteers
- ◇ Large-scale sporting events and assemblies

Wellbeing Survey

Thank you to those parents who have completed our wellbeing survey for Mr Svenssek. Students at school have also been surveyed and this is a fantastic way for us to collect data on our students' wellbeing. We react to responses and plan for improvements using data. At any stage, you feel concerned or worried about your child, please ensure you let us know and our caring staff will try and help in anyway possible. Sometimes we can recommend courses of action and area always hear to support our Moulamein families.

Year 5/6 Writing with Mrs Wilson



In our Year 5/6 class students are working on writing more detailed descriptions with paragraphs about well-known book characters. Last week, they wrote a detailed description on the Big Bad Wolf, who is a favourite villain in picture books and nursery rhymes. He is a stereotypical 'bad-guy'. They concentrated on separating information, using extended vocabulary to build up an image in the reader's mind.

Big Bad Wolf

In the gloomy forest, amongst the shadowy plantation, lurks an evil wolf. Deer, owls and critters keep an eye out as he creeps out of his dull den.

His deep yellow eyes stare into the wind as his nose twitches smelling for prey. His smooth claws dig into the crunchy forest floor. He's rough coat flickers down his back to the tip of his ragged tail. The ears on top of his head point vertically up towards the moonless sky. His bloodthirsty mouth drips and holds his teeth which are as sharp as a razors edge.

The wolf is cunning and will feast on anything he comes across including little girls in red hoods or innocent little pigs. He is quick and sly and can catch anything off guard. This lonely clever beast is talked about by the deer to other creatures, grazing on the evergreen grass of the forest floor near his den.

He stalks through the darkness to the foggy swamp where the wolf drinks. This harsh cruel creature never shows mercy and lives off carcasses of any animal. He will hunt down deer for a weekly meal.

The Big Bag Wolf will remain evil for the rest of his vile life. This wolf is the forest assassin. BEWARE!

By Rhys



The Big Bad Wolf!

Deep in the vast woodland, beneath the thick plantation lives the despicable wolf. Wildlife scatter into the murky forest when the sly wolf comes out from his cave.

His red beaming eyes glow like a glow stick. He has a bristly tail and pointed alerted ears. The wolf's elegant body moves quickly, ready to pounce on prey. He is a fierce and powerful devil. The wolf has slimy sharp teeth. His fur is majestic and he is white-chested.

He is a malicious monster. Dangerous and evil. A charming wolf who sneaks around scaring innocent kids and animals. A foolish, hateful beast who everyone is frightened of.

When the moon is awake, the wolf is plotting his deadly plan! He is a sneaky assassin who lurks around the forest like a nin-ja. Anyone who approaches him will end up in his bloodthirsty mouth as he tricks people into thinking that he is a hand-some, kind wolf.

Warning: this wolf is a ghastly beast! Do not go near him! He is wicked and cruel. Frightening anyone who messes with him. Don't be fooled by his schemes. He is a lethal devil, so stay away!

By Meg

The Big Bad Wolf

Deep in the forest, where trees are like faint black figures, lives the cold-hearted wolf. All life turns silent as the masculine creature crawls out of his man cave.

The wolf's beady green eyes glow in the night sky. His pitch-black silky fur camouflages with the gloomy, dark setting. Narrow yellow fangs compliment his curvy sharp nails. His moist, shiny nose smells fear and his pointed ears twitch as he listens for his next innocent victim. The wolf's ruffled tail and white chest intimidates any incomer. His husky voice comes from deep inside where no-one wants to end up.

This cunning animal is the opposite of his targets. He is deceptive and evil and has the most bone chilling of a personality. Red Riding Hood and the folks of the village close to her cottage refer to him as sly but delicate. If you say one thing wrong to this dude or try to talk to him about his feelings he will turn you into the billionth person on his enemy list. His charm and disguises make him unrecognisable and dangerous.

Sweet white bunnies are his version of a bag of chips. He flattens them and snacks in front of the heart wrenched families. He is more of a night shift guy as he tends to blend in and can surprise the sleeping people. He loves to trick gullible children. His jaw drops and drool runs down when his evil schemes turn out as planned. He prepares feasts on the log near his den.

The big bad wolf is not a mate you would want to hang out with on the weekend or he might literally be hanging you. He prefers scaring pigs, sweet little girls and wood cutters. This master of deception is not one to mess with!

By Sophie



The Big Bad Wolf

In the gloomy woodland, near the swampy plantation, lives the mischievous Big Bad Wolf. Racoons and hedgehogs flee in the woods, when the wolf crawls out of his cave.

He peers out around his cave and his blood-shot eyes, his bushy tail and his magnificent fur. His sharp pointy teeth show when he smiles like he's ready to pounce on his pray. His spikey ears are listening to rustling leaves when racoons move from their burrows hidden high in the trees.

He sneakily moves to capture his prey. He runs up to his pack like he wants to catch up. Everyone and everything run away in terror. The people warn everyone about the Big Bad Wolf. Little Red Riding Hood was warned!

The evil wolf isn't a nice person. He tricks innocent women, just ask Little Red Riding Hood's Grandma! He is a loner who plans evil tricks, he thinks only of eating victims.

WARNING! Don't go near the Big Bad Wolf! If he sees you, he will chase you... he is not a nice wolf!

By Faith

News from Miss Shupfer and Year 1/2

The children in Stage 1 have settled beautifully into term 3 and are ready for lots of new and exciting learning!

Last Friday, the children participated in some timed fine motor challenges. They enjoyed challenging their friends and improving their fine motor skills.



This term we are looking at seasons as part of our Geography and Science units. After discussing what we could hear, smell, taste, feel and see, the students wrote some fantastic descriptive sentences on each season.

In autumn, the leaves are changing colours. It gets cooler in autumn. We get to jump in the leaves. – Harry

I like autumn because I get to jump in big piles of leaves. When I run through the leaves, I hear rustling and crunching. – Aleisha

Winter is a horrible season. I can see rain and frost. Winter is cold! It is freezing! - Nate

Spring has very, very, very colourful flowers. I can hear birds tweeting. – Darcy

Spring is a lovely season because flowers bloom and blossoms bloom in the trees. In spring I can hear birds chirping. – Ebony

Spring is colourful. I hear birds chirping in spring. – Peter

In spring you can see blooming flowers and hear bees buzzing. – Remi

In spring I can see blooming flowers on the lush, green grass. – Spencer

I can taste cold drinks, ice cream and icy poles in summer. I can smell barbecues cooking and hear people laughing. – Mila

In autumn, the tree leaves are changing colours. – Colton

Summer is burning hot so I have a cool drink to stay hydrated. – Harper

In autumn, I can see colourful leaves falling off the trees. – Willow

In autumn, I can see red, yellow and orange leaves. – Jaime

Winter is freezing cold. I can smell woodfire smoke. - Brody

