

Wongi

An Aboriginal Word for 'talk' or 'chat'

A community newsletter circulating the Moulamein District for over 40 years

Telephone: 0427 979 914 or 5887 5208

Email: moulameinwongi@hotmail.com

Issue: 25 Date: 5th October 2021

Community Art Project



Penny Munro



Mandy Ivers



Moulamein Public School

Email: Moulamein-p.school@det.nsw.edu.au

www.moulamein-p.school@det.nsw.edu.au

T: 03 5887 5208

2021 Term 4 Week 1

In this Issue:

- ◆ Principal Messages
- ◆ Welcome Back!
- ◆ Current Restrictions
- ◆ Welcome Jude Downie
- ◆ Community Art Challenge

Principal Messages - Jennie Wilson

Welcome back to Term 4!

Our staff and students are very excited to be back at school for face-to-face learning and hope for it to continue throughout the rest of the term.

Term Dates for students:

Tuesday 5th October-Thursday 16th December

Current Restrictions

While our staff and students will be back on site, we will be operating at Level 3 which greatly restricts student mingling and puts into place strict COVID-safe procedures such as:

- Mask wearing is mandatory for all staff and outdoors when at school.
- Enhanced cleaning arrangements remain in place, which are:
 - an additional 25% of cleaning provided to schools for the daily clean
 - day cleaners wipe down high-touch surfaces
 - schools and workplaces have supplies of hygiene products ensuring bathrooms are well stocked with hand soap and paper towels or hand dryers
 - providing hand sanitiser where appropriate.
- Restrictions on visitors to the school.
- No assemblies, excursions or community use of school grounds.

When restrictions change, I will let you know as soon as possible and adjust our school organisation. At this stage we cannot set a date for our Year 6 graduation (with parents). Presentation Day arrangements will be made closer to the end of the year so guidelines are current and relevant for the event.

Swimming remains on hold, but we are hoping to continue our planned lessons when restrictions are lifted later in the term.

NSW Health and the Department of Education are taking further steps to ensure our schools are COVID-safe by mandating COVID vaccinations for all staff and support workers.

Welcome Jude Downie

This term we welcome Jude Downie, who will be working in each classroom as a teacher and teaching Environmental Studies across K-6. We feel very privileged to have a teacher with expertise in understanding and working with students with special needs. She has also arrived with a nursery of seedlings for the students to get our vegetable patch up and running.

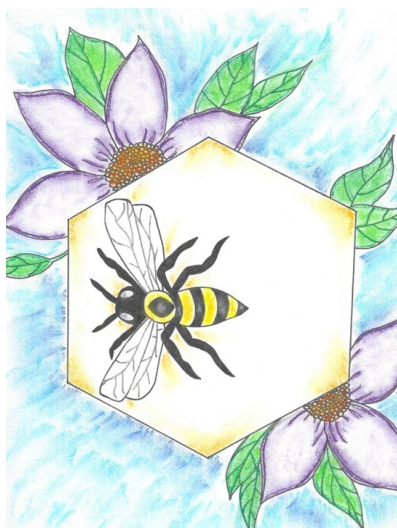


Community Art Challenge

During the term, our students in Years 3-6 have been participating in a weekly Art Challenge. We have been sharing the results on our Facebook page. During lockdown, we invited community members to join the weekly challenge. Artworks were then emailed to jennie.wilson@det.nsw.edu.au and placed into an online Community and student exhibition. We have had a great response! This week our theme is the Sun and Moon. Each week we will post instructions on our Facebook page and have hard copies to the office.



Rachel Schupfer



Maddy Houlihan



Kris McGlashan



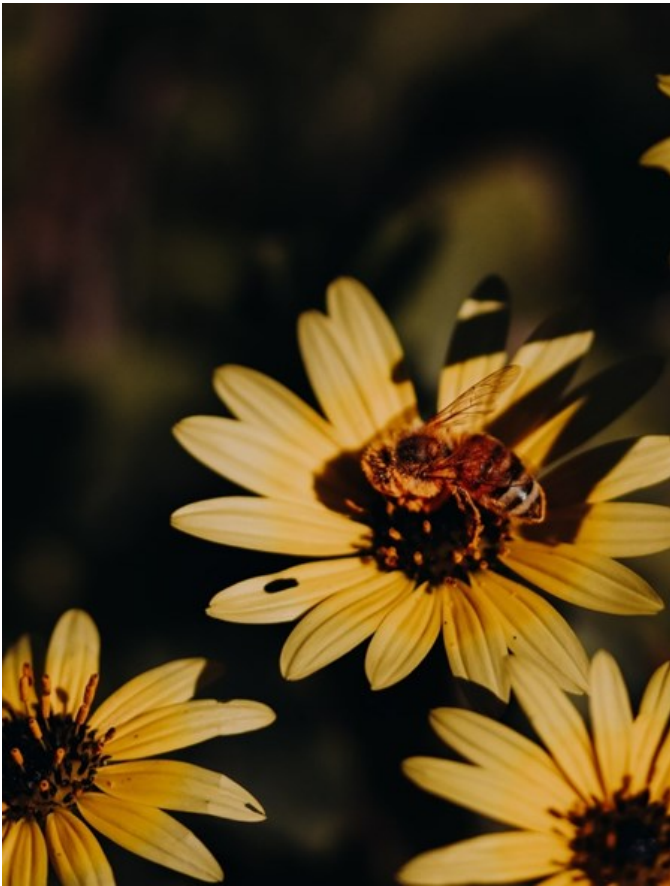
Kendra Bell



Jill Reed



Margot Isailovic



Emily Spinks



Sandy Peeters



Jamie Coote



Jacqueline Kerry



Jump on to our Facebook page to see many more entries. A link will take you to our online gallery!

<https://www.facebook.com/MoulameinPS>

Jennie Wilson

Principal